

Cable terminations

Copper tube terminals

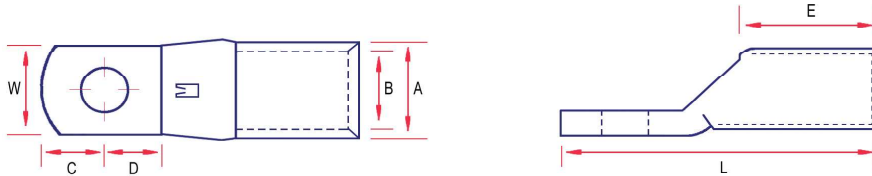
Reduced Palm Heavy Duty Terminals

Application: For L.V. circuit breakers with reduced space terminal blocks for immediate and easier installation.

Material: Manufactured from seamless copper tube to BS EN 12449:2016

Finish: Electro Tin plated to BS 1872:1974

- All terminals are manufactured from 99.5% copper and fully annealed to ensure optimum ductility to avoid severe deformation such as cracking and splitting when crimped
- All SWA terminals are identified with the unique SWA part number denoting cable size and stud hole size for full traceability to ensure correct selection of the appropriate tool and dies



Part No.	Cond. Size mm ²	Stud Hole	Dimensions in mm						
			A	B	C	D	E	W	L
10-5TRP	10	M5	6.9	4.5	6.0	6.5	9.0	9.0	26.0
16-5TRP	16	M5	7.9	5.6	6.0	6.5	11.0	9.0	29.0
25-5TRP	25	M5	9.5	7.0	6.0	6.5	13.0	9.0	31.5
35-6TRP	35	M6	11.0	8.2	7.0	8.0	14.0	11.5	36.5
50-6TRP	50	M6	12.1	9.5	7.0	8.0	18.0	11.5	40.5
70-6TRP	70	M6	15.0	11.5	7.0	8.0	18.0	11.5	44.0
70-8TRP	70	M8	15.0	11.5	7.0	8.0	18.0	14.5	44.0
95-8TRP	95	M8	17.0	13.5	8.0	9.0	24.0	15.5	52.5
120-8TRP	120	M8	19.0	15.0	9.0	14.0	27.0	19.0	60.0
120-10TRP	120	M10	19.0	15.0	9.0	14.0	27.0	19.0	60.0
150-8TRP	150	M8	21.0	16.5	9.0	18.0	27.0	19.0	70.0
150-10TRP	150	M10	21.0	16.5	9.0	18.0	27.0	19.0	70.0
185-10TRP	185	M10	23.0	18.5	9.0	18.0	30.0	24.5	77.0
240-10TRP	240	M10	26.0	21.0	10.0	16.0	32.0	31.0	80.0
240-12TRP	240	M12	26.0	21.0	12.0	20.0	32.0	31.0	86.0
240-16TRP	240	M16	26.0	21.0	17.0	19.0	32.0	31.0	94.0
300-10TRP	300	M10	28.0	23.0	12.0	18.0	37.0	31.0	95.0
300-12TRP	300	M12	28.0	23.0	12.0	18.0	37.0	31.0	95.0

All chamfered entry

For recommended tooling refer to TQ terminals.